

Need a Mortgage in principle
to make offers? Call us now
for quick assistance!
0121 775 0101



Do you need to sell?
Start your journey now!
Call us we can help.
0121 775 0101



SCAN FOR MORE INFO
SIZE - 1728 Sq Ft
TENURE - Freehold
COUNCIL TAX - Solihull Metropolitan Borough Council - F
BROADBAND - Upload Max 1000Mbps
Download Max 1800Mbps
MOBILE - O2 Vodafone
EPC - D - 64
PARKING - For at least 4 Cars
FLOODRISK - Very Low
SERVICES - Mains
COVENANTS - N/A

Are you an investor
interested in expanding your
portfolio?

**Call 0121 775 0101 to provide your
investment criteria for alerts.**

PROSPECT LANE

Solihull, B91

This handsome traditional detached house offers a delightful blend of classic elegance and modern convenience. The extended family home is designed to cater to the needs of contemporary living and is perfect for families seeking a spacious and inviting environment in a sought-after location.

FEATURES

- Extended Traditional Detached Property
- Spacious Family Accommodation
- Two Reception Rooms
- Modern Fitted Breakfast Kitchen
- Guest Cloakroom
- Principal Bedroom with Fitted Wardrobes
- Two Further Good Sized Bedrooms
- Single Bedroom Four
- Spacious Four Piece Family Bathroom
- Private South-West Facing Garden
- Ample Driveway parking and Single Garage
- Convenient Location



SCAN TO **VIEW OUR**
WEEKLY FILMS &
SUBSCRIBE

Sneak Peeks

Every week, we unveil "Sneak Peeks," a feature showcasing exclusive properties before they hit Rightmove and other platforms.

The Landlord Club

Join our Landlord Club for weekly updates on legislation, market trends, and our Letting Director's 'Investment Pick of the Week' for optimal ROI.

HTSPMD

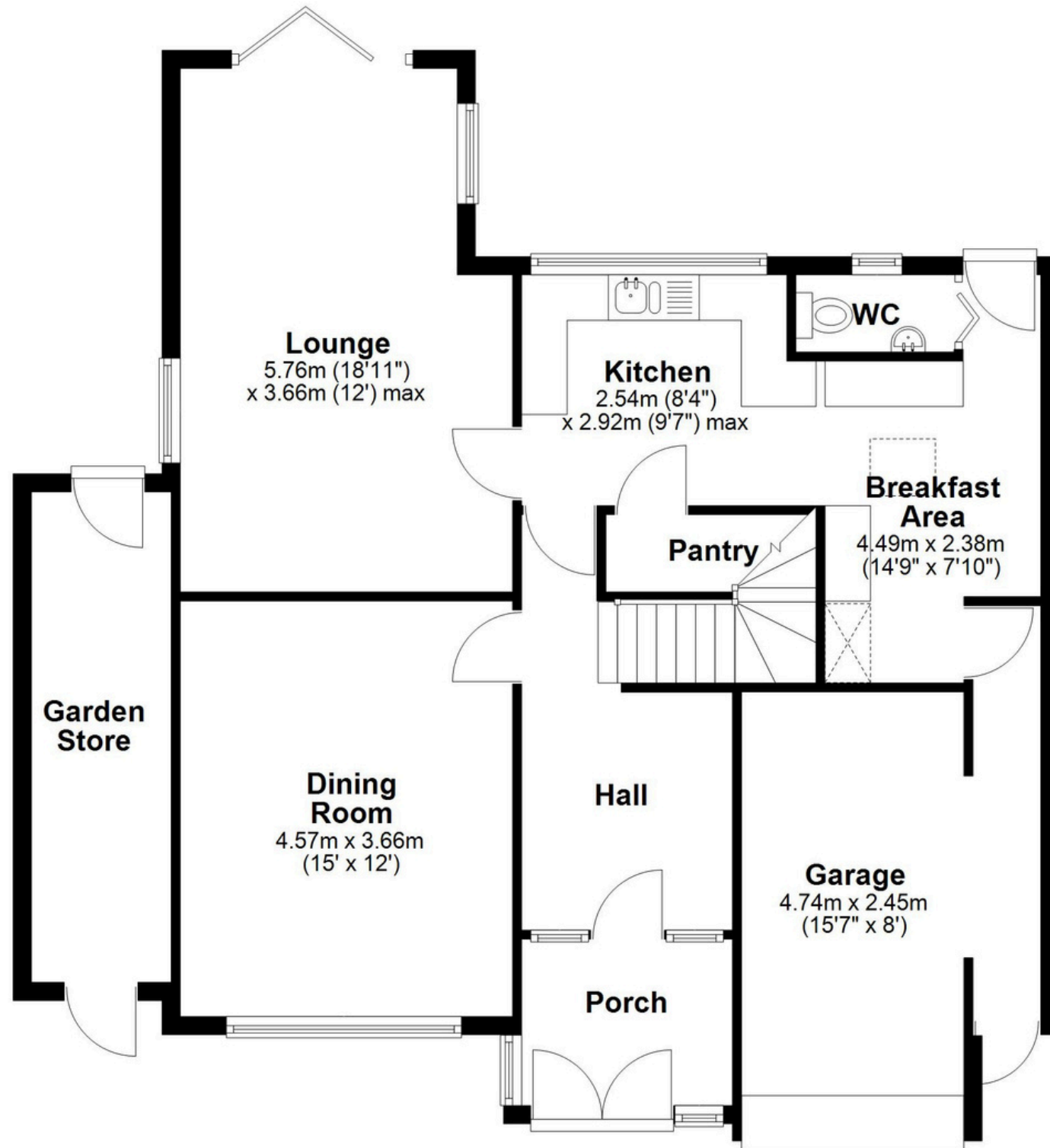
Tune into 'How's The Solihull Property Market Dom' weekly for a quick, insightful snapshot of the market.

The Mortgage Update

Get weekly insights and the best deals with our Mortgage Update, your shortcut to navigating the complex mortgage landscape confidently.

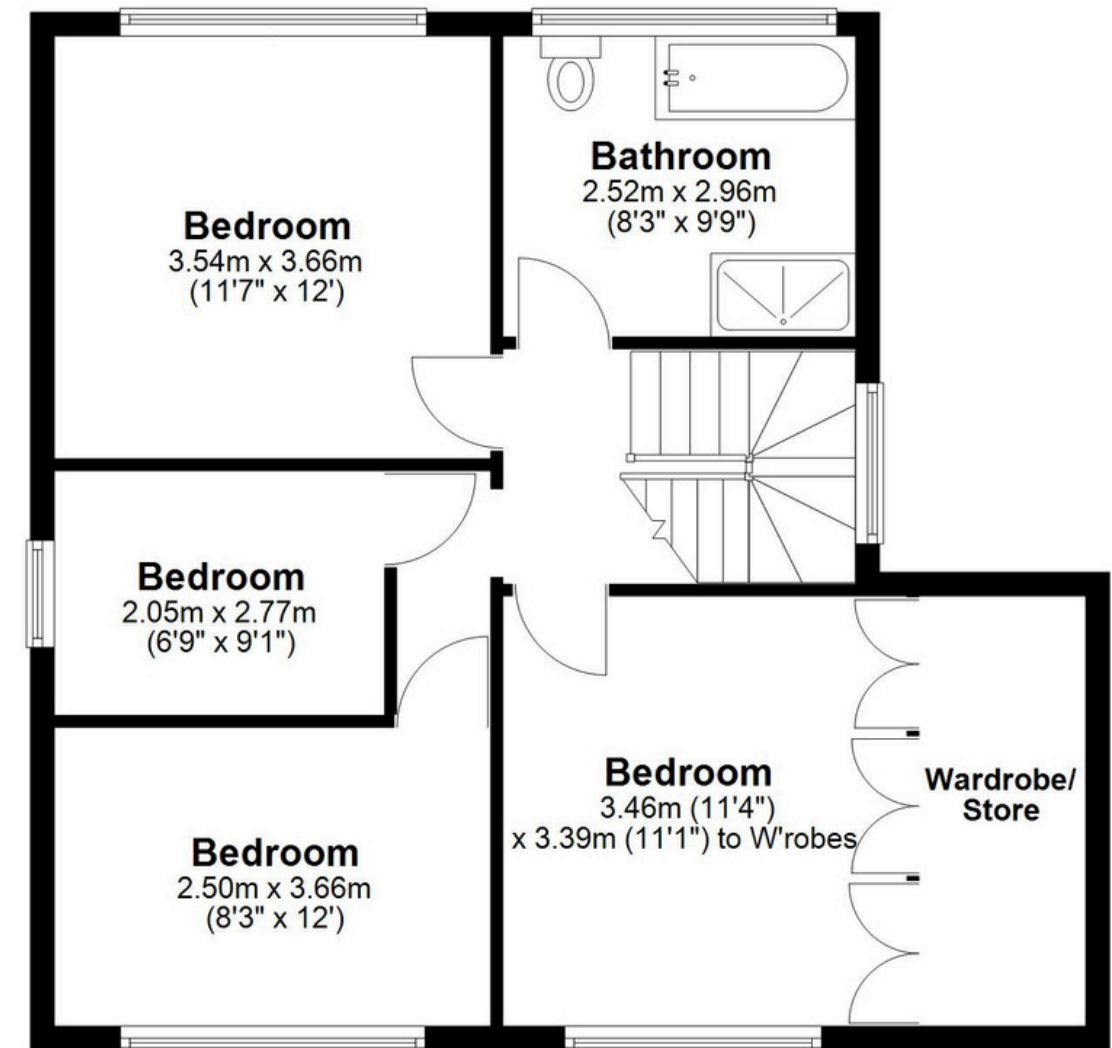
Ground Floor

Approx. 98.4 sq. metres (1058.6 sq. feet)



First Floor

Approx. 62.2 sq. metres (669.4 sq. feet)



Total area: approx. 160.5 sq. metres (1728.1 sq. feet)

This floor plan is for illustration purposes only, this is not intended to be a measured/scaled survey or comply with RICS guidelines. All measurements (including total floor area) openings, orientation and floor area are approximate. No details are guaranteed, they cannot be relied upon for any purpose and do not form part of any agreement. A party must rely upon its own inspection(s). No responsibility is taken for any error, omission, or mis-statement.
Plan produced using PlanUp.